

ZOOMLION

ELECTRIC TELESCOPIC BOOM LIFT

ZT38JE

Comply with CE Standard

FEATURES

Standard Features

Horn
Proportional contro;
All motion alarm
Flashing amber beacon
Self-closing entry gate
Emergency lowering system
Emergency stop system
Auto-leveling system
On-board diagnostic system
Over tilt protection system
Oscillating axle
Load sensing system
4.3" LED display

Accessories & Options

- ▶ Platform light
- ▶ Anti-collision safety lever
- ▶ AC power to platform

HIGHLIGHTS

- ▶ High-efficiency and energy-saving hydraulic system deadweight lowering technology, saving energy consumption by 23.6%; with load-sensing control technology, saving energy consumption by 13.8%
- ▶ Safe and reliable lithium battery power system equipped with BMS low-temperature heating and low-temperature charging current control functions improves battery life by 30% and adapts to -20 °C cold environment
- ▶ Maintenance-free wheel side AC drive system, the maximum gradeability can reach 45%
- ▶ 220V/380V full voltage adaptable charger - the three most common charging plugs 10A, 16A, 32A are matched with the matching signal plug on the charging head, can realize charging mode matching and adaptive power for charging



ACCESS WITH ZOOMLION GREEN

Phone: 0086(731)-88353680 0086(731)-88250971
E-mail: awm@zoomlion.com

Add: ZOOMLION Wangcheng Industrial Park, Tengfei Road 997, Changsha, Hunan, China
Web: www.en.zoomlion.com

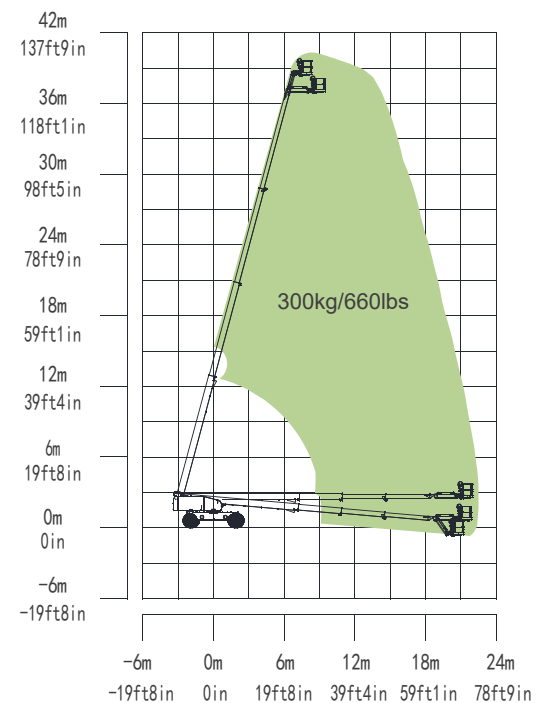
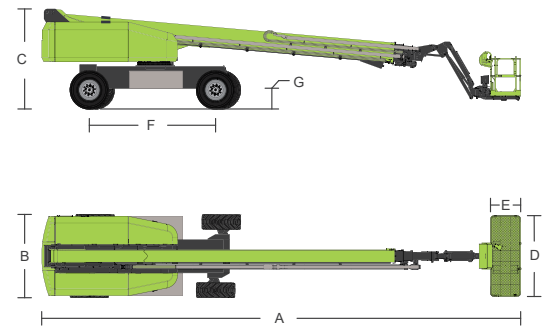
ZOOMLION

ELECTRIC TELESCOPIC BOOM LIFT

ZT38JE

Comply with CE Standard

Model	ZT38JE	
	Imperial	Metric
Size		
Work height	131ft 11in	40.22m
Platform height	125ft 5in	38.22m
Horizontal outreach	74ft 3in	22.64m
A Stowed length	40ft 3in (47ft 1in)	12.26 (14.35) m
B Stowed width	8ft 2in (12ft 8in)	2.49/3.87m
C Stowed height	9ft 10in	3m
D Platform length	8ft	2.44m
E Platform width	3ft	0.91m
F Wheelbase	12ft 6in	3.81m
Tread	8ft 2in (12ft 8in)	2.49/3.87m
G Ground clearance	1ft 4in	0.41m
Performance		
Platform Capacity (Unrestricted/Restricted)	660lb	300kg
Travel speed (stowed)	3.1mph	5km/h
Grade ability	45% (24°)	45%
Turning radius (inside)	10ft 10in/25ft 3in	3.3/7.7m
Turning radius (outside)	26ft 11in/35ft 5in	8.2/10.8m
Turntable rotation	360° continuous	360°
Platform rotation	±90°	±90°
Tail swing	4ft 10in	1.46
Jib rotation	-55°~75°	-55°~75°
Wind speed	28mph	12.5 m/s
Power		
Battery	606Ah	606 Ah
Charger	6kW	6kW
Drive/Pump motor	30kW	30kW
Auxiliary power	2kW,1.3CC	2kW,1.3CC
Hydraulic tank	52.8 (us gal)	200L
Tire		
Tire type	IN445/50D710 Foam-filled	
Weight		
Gross	42328lb	19200kg



Range of Motion ZT38JE